

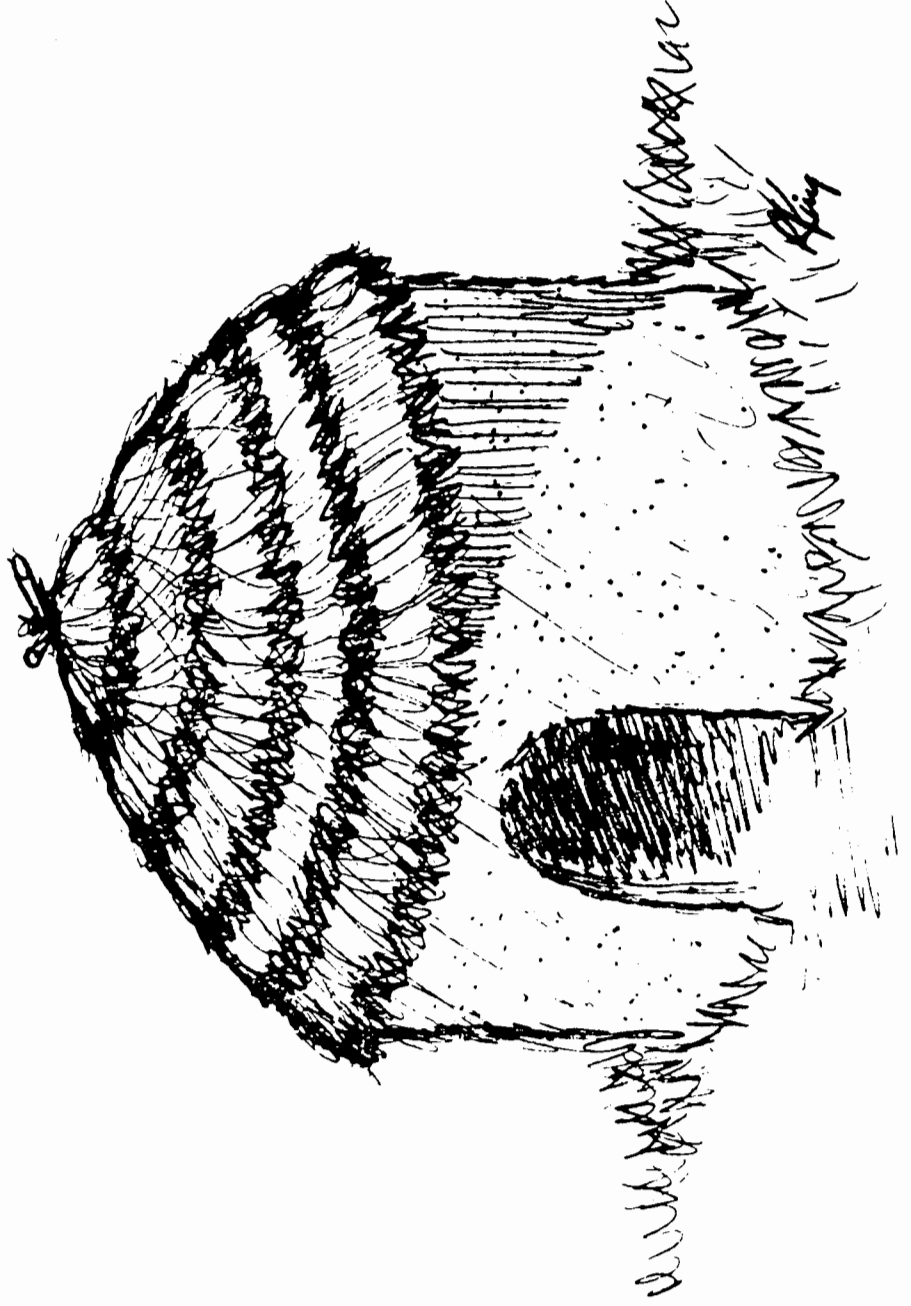
Historic Preservation Center
190 Southeast 12 Terrace
Miami, Florida 33131
305/358-9572

A book to color for kids of all ages

TEQUESTA INDIAN HUT

PALM FRONDS
2000 BC

ARCH CREEK MEMORIAL PARK, NE 135 STREET AND BISCAYNE BOULEVARD, MIAMI
(ARCH CREEK PARK IS ON THE NATIONAL REGISTER OF HISTORIC PLACES)

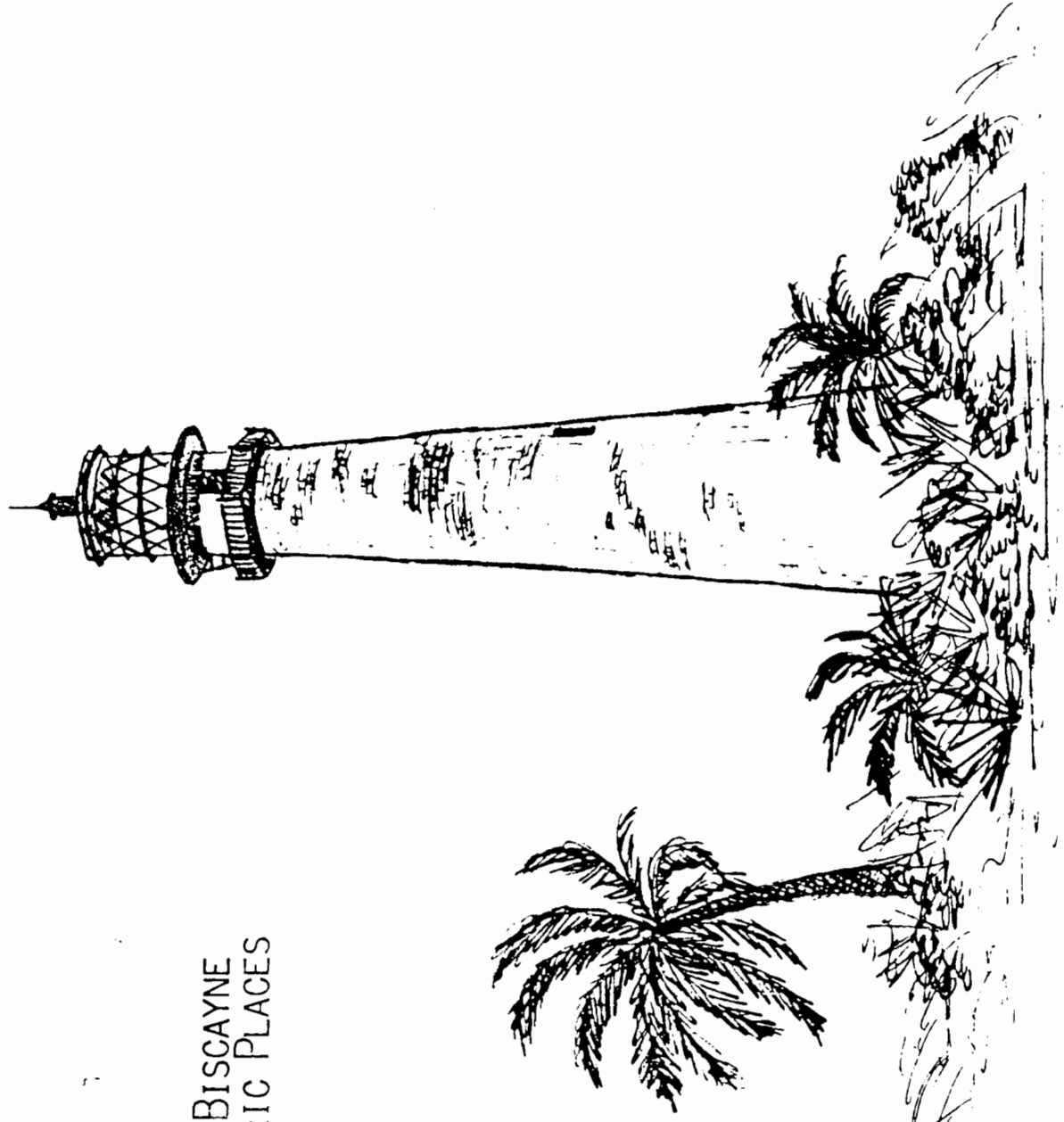


CAPE FLORIDA LIGHTHOUSE

BRICK

1825

BILL BAGGS STATE PARK, KEY BISCAYNE
NATIONAL REGISTER OF HISTORIC PLACES

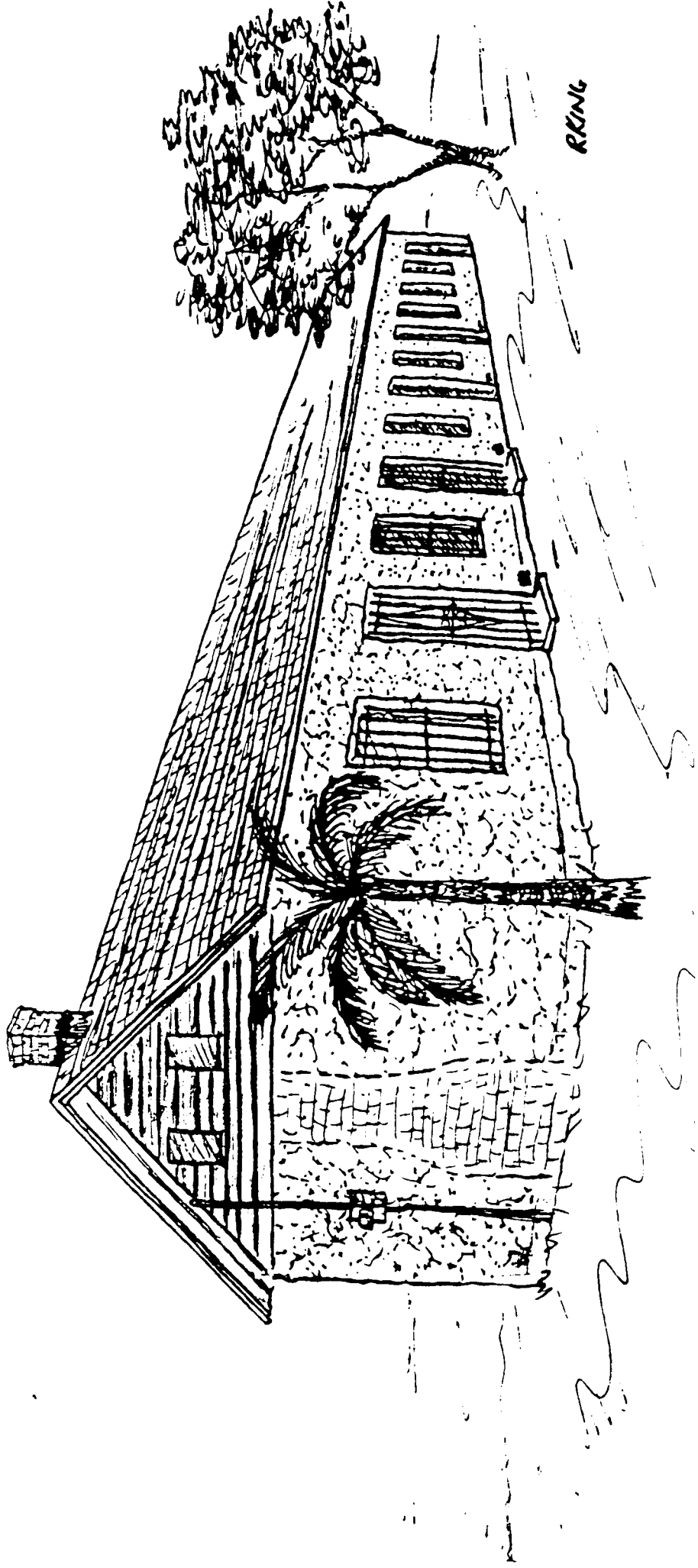


WILLIAM ENGLISH SLAVE QUARTERS/FORT DALLAS BARRACKS

COLITIC LIMESTONE (CORAL ROCK)

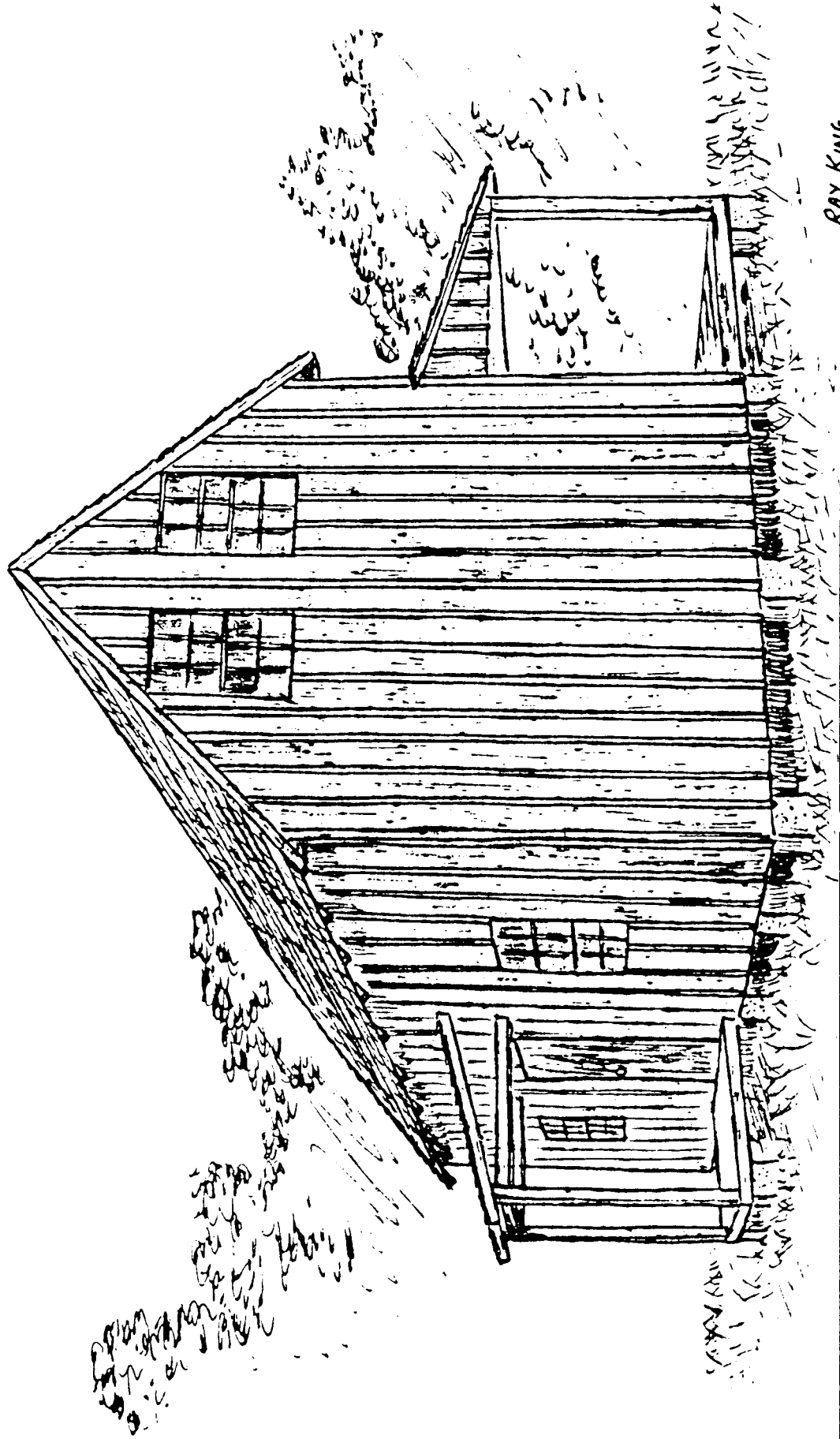
1849

LUMMUS PARK, NORTH RIVER DRIVE, DOWNTOWN MIAMI



WILLIAM WAGNER HOMESTEAD
FRAME VERNACULAR
1855

LUMUS PARK, NORTH RIVER DRIVE, DOWNTOWN MIAMI



RAY KING

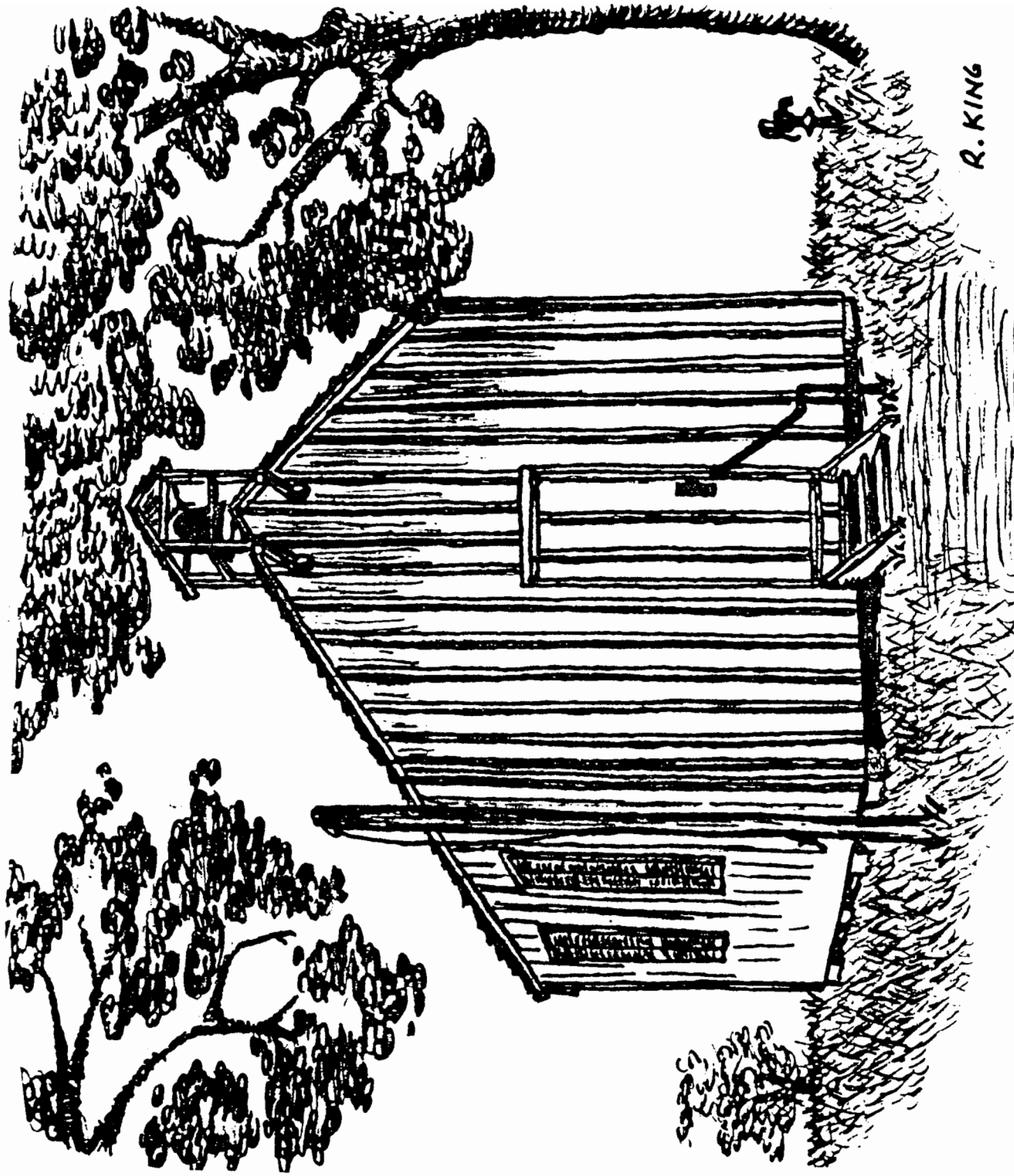
FIRST COCONUT GROVE SCHOOL

FRAME VERNACULAR

1897

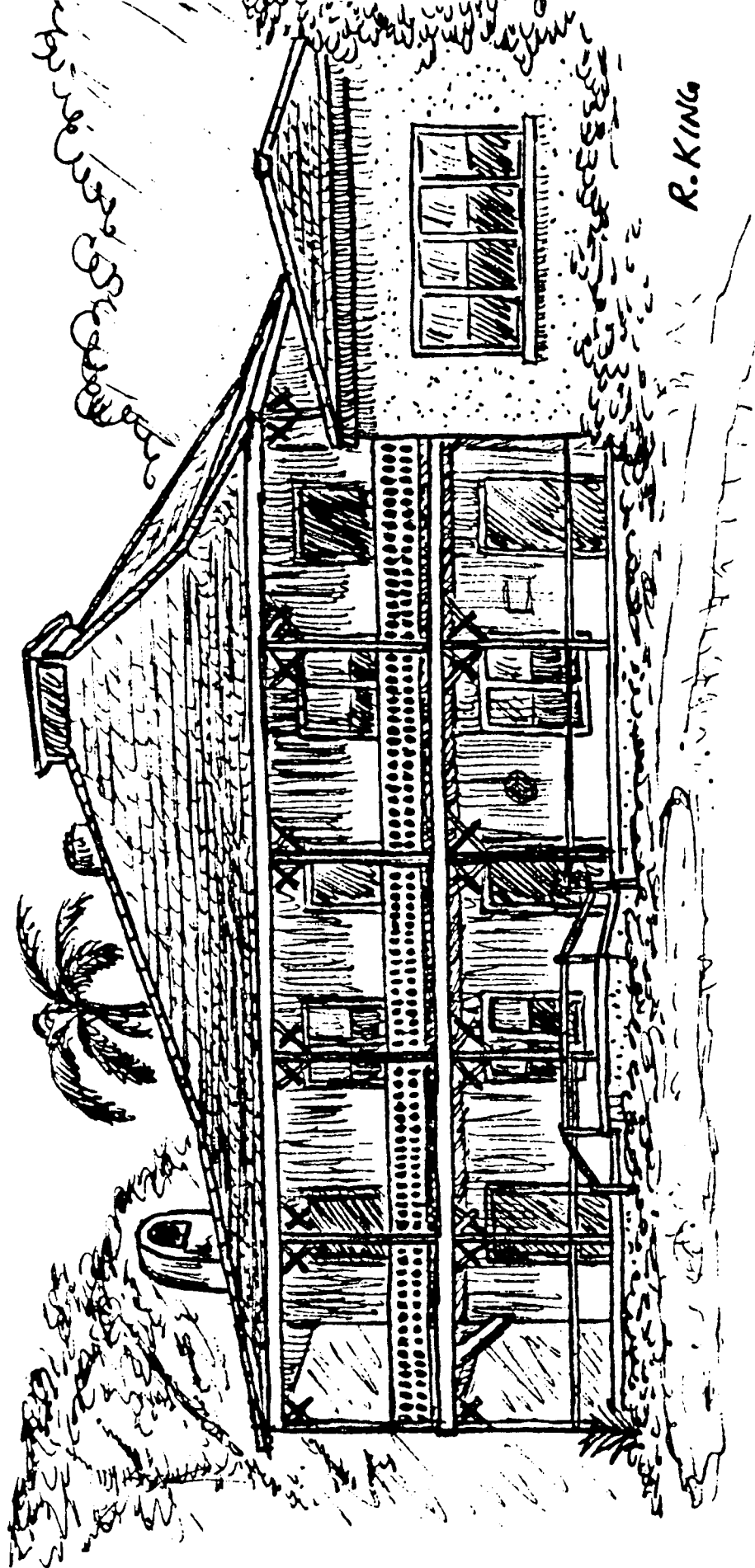
3429 DEVON ROAD, COCONUT GROVE

NATIONAL REGISTER OF HISTORIC PLACES

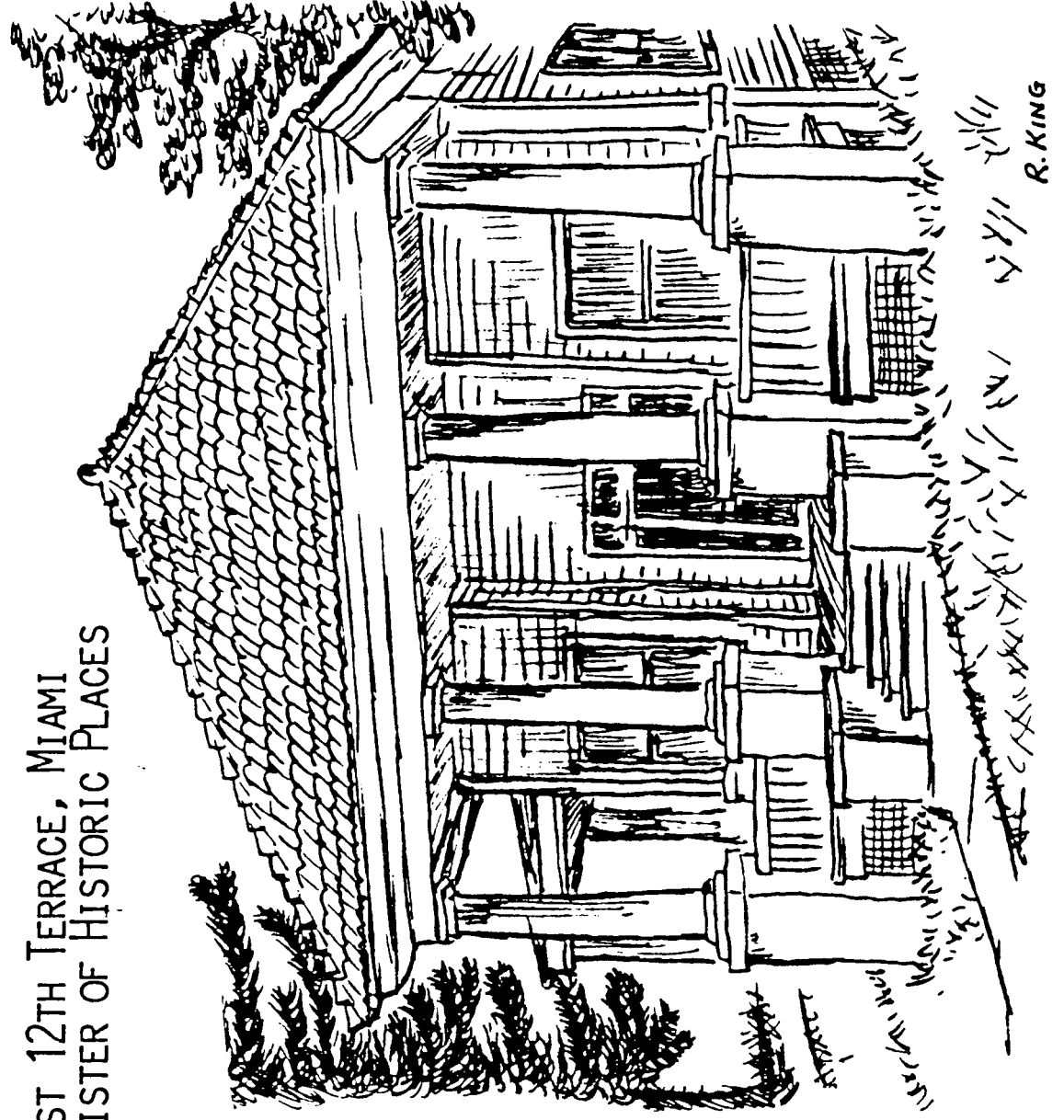


R. KING

THE BARNACLE
VERNACULAR ARCHITECTURE
1891
3485 MAIN HIGHWAY, COCONUT GROVE
NATIONAL REGISTER OF HISTORIC PLACES



DR. JACKSON'S OFFICE AND SURGERY
NEO-CLASSICAL DESIGN
1905
190 SOUTH EAST 12TH TERRACE, MIAMI
NATIONAL REGISTER OF HISTORIC PLACES



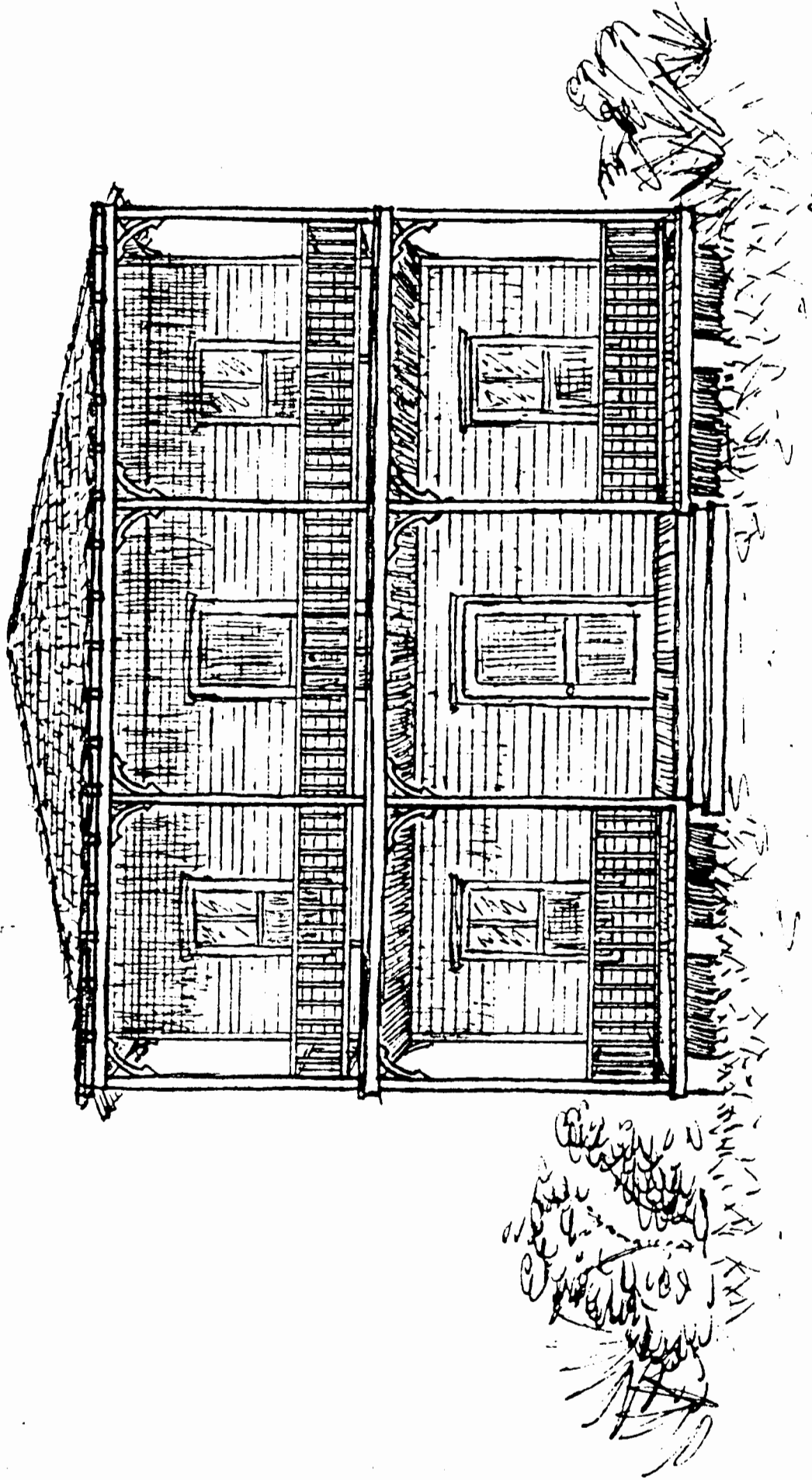
R. KING

BAHAMIAN OR CONCH HOUSE

FRAME

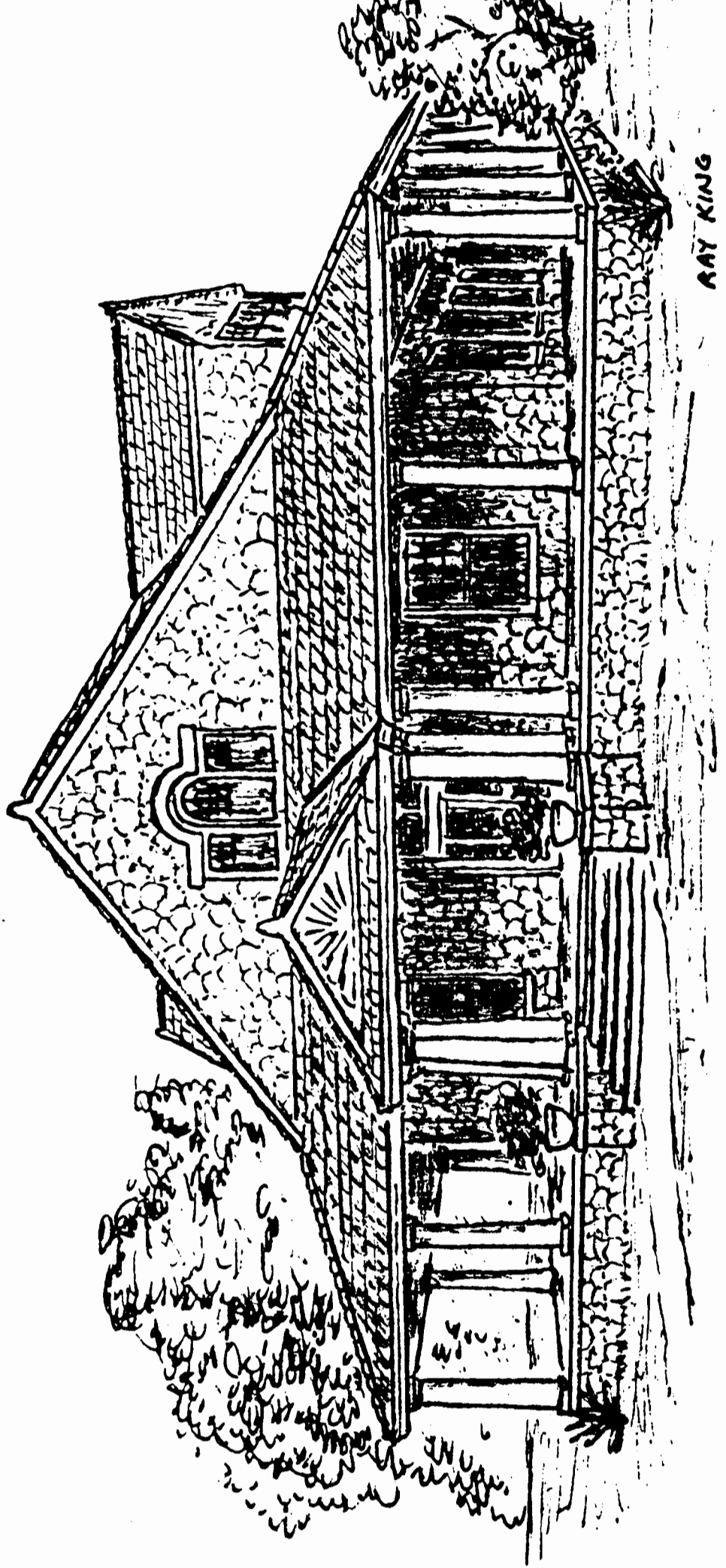
1896-1920'S

FOUND IN CULMER-OVERTOWN IN MIAMI OR ON CHARLES AVENUE IN COCONUT GROVE



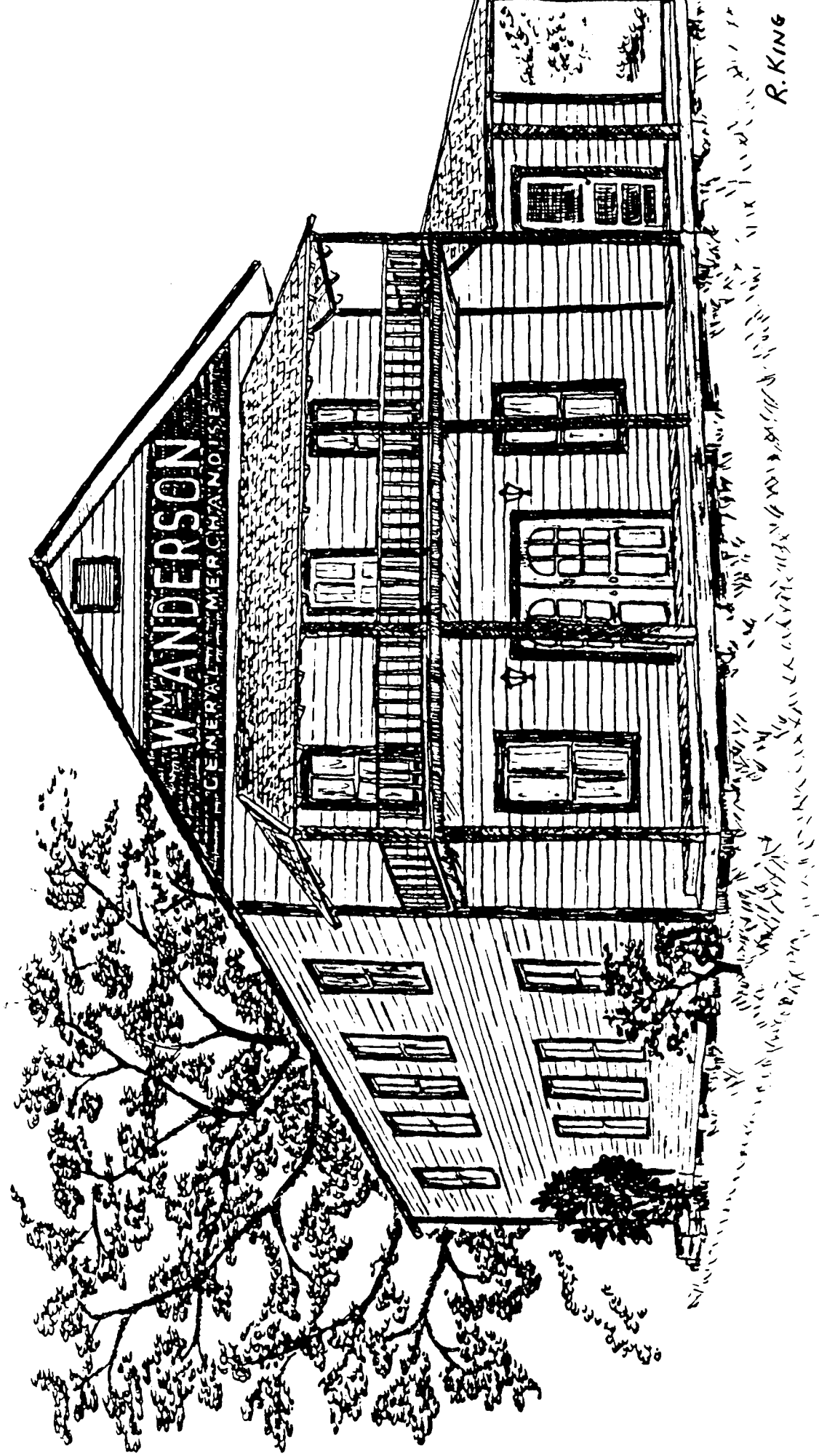
RAY KING

CORAL GABLES HOUSE
MASONRY VERNACULAR
1906
907 CORAL WAY, CORAL GABLES
NATIONAL REGISTER OF HISTORIC PLACES

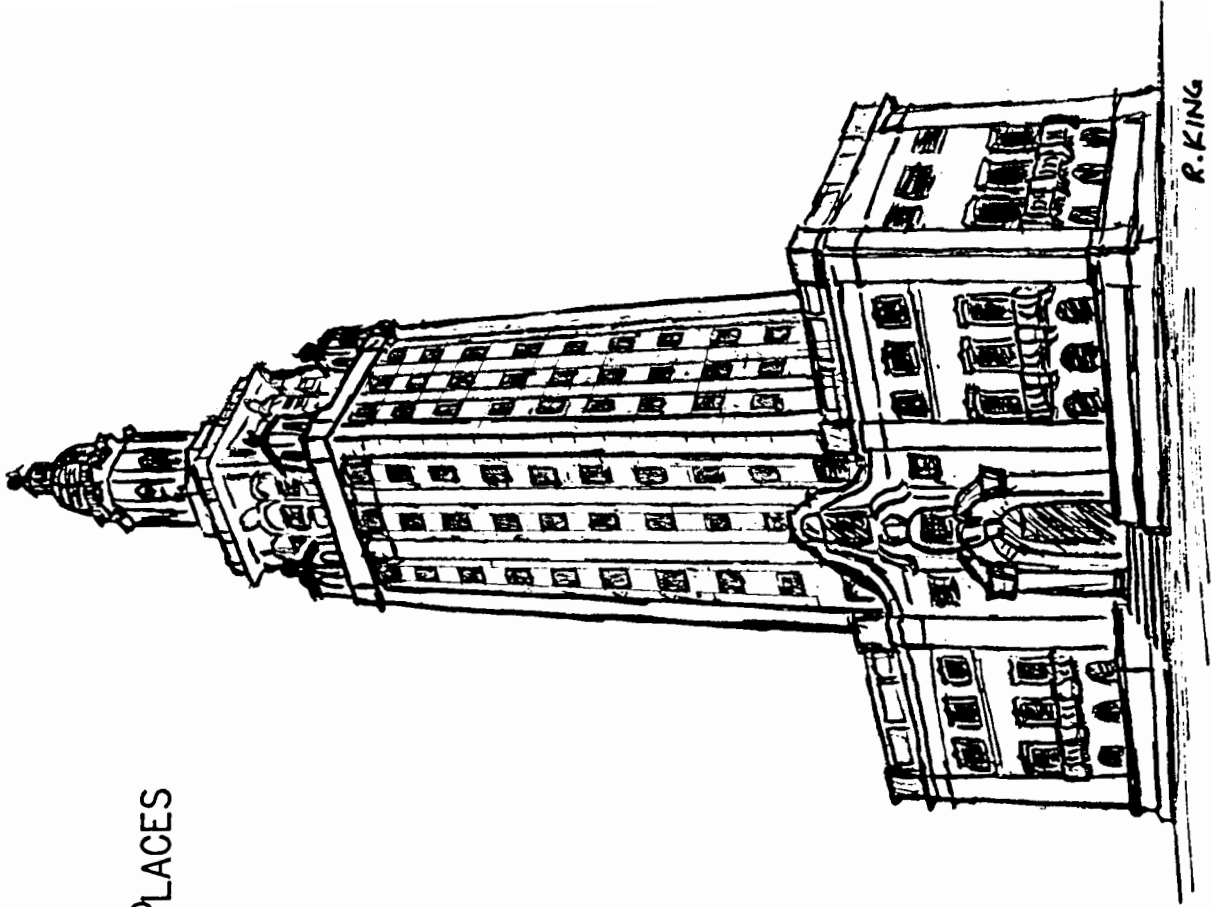


ANDERSONS' CORNER
FRAME VERNACULAR
1911

15700 SOUTH WEST 232ND STREET, GOULDS
NATIONAL REGISTER OF HISTORIC PLACES



FREEDOM TOWER
MEDITERRANEAN REVIVAL STYLE
1925
600 BISCAYNE BOULEVARD, MIAMI
NATIONAL REGISTER OF HISTORIC PLACES

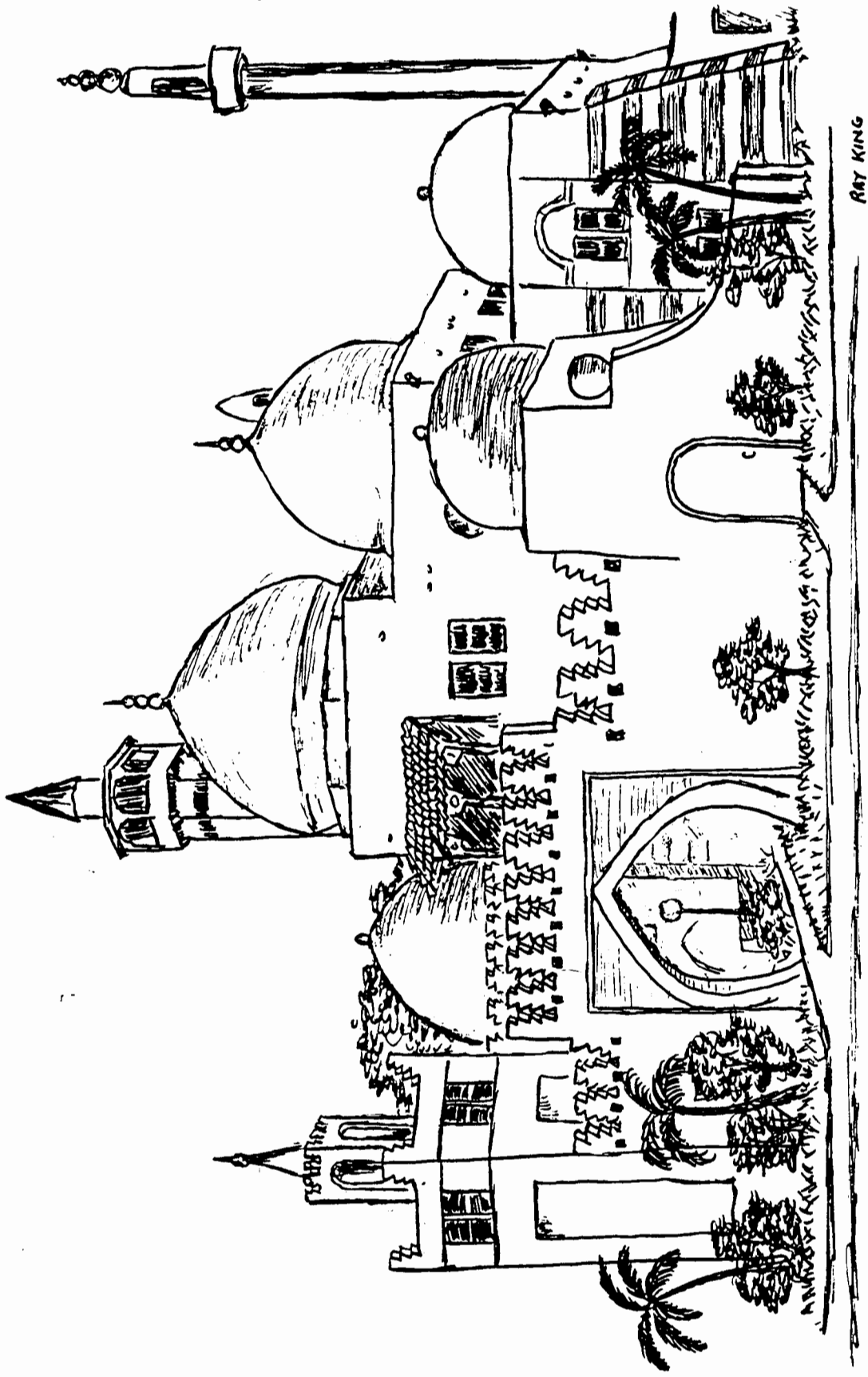


OPA-LOCKA CITY HALL

MOORISH STYLE

1926

**777 SHERAZAD BOULEVARD, OPA-LOCKA
NATIONAL REGISTER OF HISTORIC PLACES**



Draw your favorite old building.